



version 2/22



INSTALLATION AND MAINTENANCE INSTRUCTIONS

SAFETY AND PROPER USAGE

To ensure safe and enduring performance of this product, you must comply strictly with the instructions enclosed herein. Non-compliance with instructions or improper handling of the product will void your warranty! Usage of this product in conditions not specified in this manual or in contrary to the instructions hereby provided is considered IMPROPER. The manufacturer will not be held liable for any damages resulting from improper use of the product.

SAFETY & WARNING INSTRUCTIONS

- Observe valid and generally accepted safety rules when planning, installing and using this product.
- Take proper measures to prevent unintentional operation of the product or damage to it.
- Do not attempt to disassemble this product or lines in the system while they are under pressure.
- Always depressurise the compressed air system before working on the system.

It is important that personnel use safe working practices and observe all regulations and legal requirements for safety when operating this product. When handling, operating or carrying out maintenance on this product, personnel must employ safe engineering practices and observe all local health and safety requirements and regulations. International users refer to regulations that prevail within the country of installation. Most accidents, which occur during the operation and maintenance of machinery, are the result of failure to observe basic safety rules or precautions. An accident can often be avoided by recognising a situation that is potentially dangerous. Improper operation or maintenance of this product could be dangerous and result in an accident causing injury or death. The manufacturer cannot anticipate every possible circumstance, which may represent a potential hazard. The WARNINGS in this manual cover the most common potential hazards and are therefore not all-inclusive. If the user employs an operating procedure, an item of equipment or a method of working which is not specifically recommended by the manufacturer he must ensure that the product will not be damaged or made unsafe and that there is no risk to persons or property.

NEVER CHANGE ORIGINAL COMPONENTS WITH ALTERNATIVES

INSTALLATION INSTRUCTIONS

Before installing this product, make sure it complies with your request and that it suits your application!

1.1 Unpack the unit and visually inspect for any transport damage incurred after leaving our factory.

1.2 Depressurise the system before installation or maintenance is carried out!

1.3 Locate a suitable condensate draining point on your compressed air system and connect your valve as illustrated. Connect the outlet to an oil/water separator.

- *Make sure the arrow on the valve body complies with the flow direction of the condensate.*

- *The use of a ball valve strainer is advisable.*

- *Do not use the valve shaft as lever!*

- **MAKE SURE ALL USED COMPONENTS ARE SUITED FOR HIGH PRESSURE APPLICATIONS!**

1.4 Slide the coil on to the valve shaft, place the washer and screw on the top nut. Place the timer gasket over the coil connection pins.

- *Make sure there is no debris between the gasket and the coil.*

1.5 Mount the timer on to the coil as illustrated, you can mount the timer up-right or upside-down.

1.6 Remove the protection cap from the connector and connect your power cable to the connector as illustrated. Close the connector and tighten the bottom nut firmly.

1.7 Place the connector gasket on the connector, place the connector on the timer as illustrated and tighten the screw (max. torque 1Nm). Make sure both gaskets are secured properly to ensure IP65 rating.

1.8 After double checking that the power supply corresponds with the voltage specified on the coil and falls within the range specified on the back of the timer, you can switch the power supply ON.

1.9 Slowly open the ball valve to restore normal system pressure.

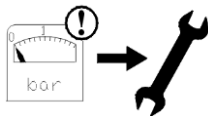
1.10 Press the TEST button to check the valve function. Adjust the ON and OFF buttons to suit your system.

1.11 Your drain is ready for operation! *Note: We advise to check this product at least once a year and replace serviceable parts when necessary. Note: (If applicable!) Clean the strainer periodically to avoid possible blocking causes by rust and/or debris. Note: Check the valve function periodically. A purging sound must be heard.*

1.1



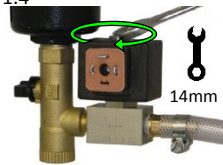
1.2



1.3



1.4



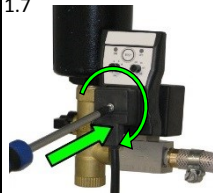
1.5



1.6

**AC:****DC:**

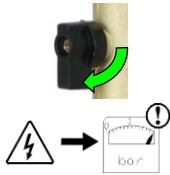
1.7



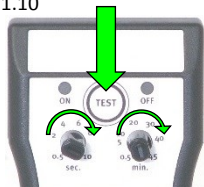
1.8



1.9



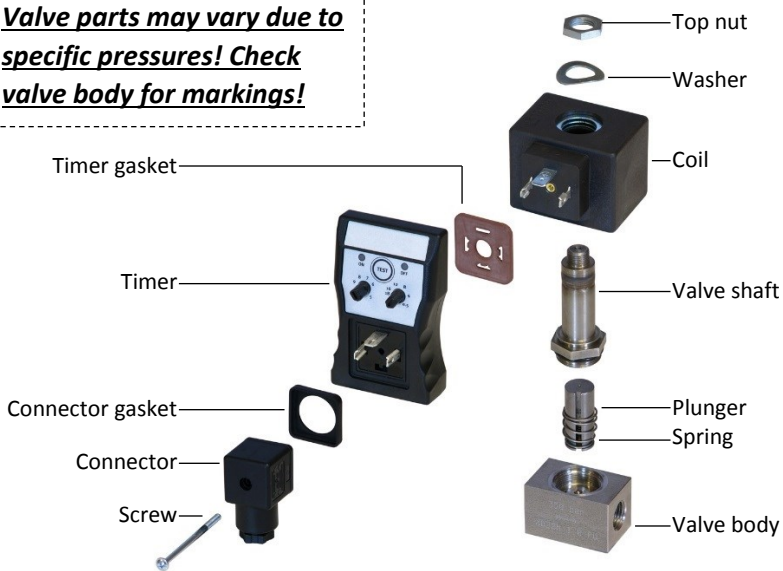
1.10



1.11

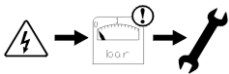


Valve parts may vary due to specific pressures! Check valve body for markings!



CLEANING INSTRUCTIONS

These instructions are for cleaning the drain. If your drain requires maintenance, i.e. replacement of wearing components, please refer to our dedicated maintenance instructions (supplied with the service kit).



Depressurise the system before installation or maintenance is carried out!

2.1 Close the condensate supply, i.e. close the ball valve.

2.2. Press the TEST button to empty the unit of any residual condensate and to depressurise the valve.

2.3 Switch off the electrical supply.

- Make sure the power is switched OFF before continuing this cleaning operation!

2.4 Unscrew the valve top nut and remove the washer.

2.5 Remove the connector, timer and coil assembly from the valve shaft.

2.6 Unscrew the valve shaft using a 23mm wrench.

Do not use the valve shaft as a lever!

2.7 Clean all the valve parts, body and shaft.

- Note: if any parts are damaged please replace them using a service kit!

2.8 Reassemble the inner parts and shaft. Screw the shaft assembly back on to the valve body using a 23mm wrench (max. torque 10Nm).

2.9 Replace the connector, timer and coil assembly on to the valve. Place the washer and screw on the top nut.

- Make sure all gaskets are placed properly to ensure IP65 rating.

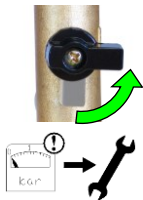
2.10 Switch on the electrical supply.

2.11 Slowly open the ball valve to restore normal system pressure.

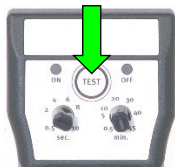
2.12 Press the test button to check the valve function. *- Your drain is ready for operation!*

Note: We advise to check this product at least once a year and replace serviceable parts when necessary. Note: (If applicable!) Clean the strainer periodically to avoid possible blocking causes by rust and/or debris. Note: Check the valve function periodically. A purging sound must be heard.

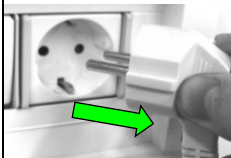
2.1



2.2



2.3



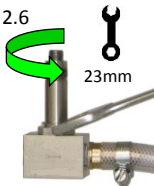
2.4



2.5



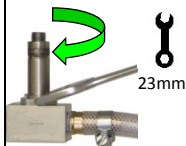
2.6



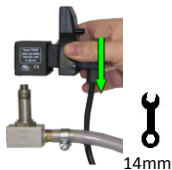
2.7



2.8



2.9



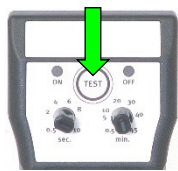
2.10



2.11



2.12



TECHNICAL SPECIFICATIONS

Maximum compressor capacity	Any size	
Pressure range	0 - 500 BAR, see specifications on valve body!	0 - 7250 PSI, see specifications on valve body!
Supply voltage options	12 – 380 VAC/DC 50/60Hz (see specifications on timer and coil)	
Medium temperature	1 – 55 °C	34 – 131 °F
Ambient temperature	1 – 55 °C	34 – 131 °F
Timer cycle range (ON / OFF)	0.5 – 10 seconds / 0.5 – 45 minutes (depending on timer model)	
Timer PCB	SMT technology	
Timer cycle indication	LED	
Test feature	Yes	
Valve type	2/2 way, direct acting	
Valve orifice	Depending on valve model and pressure rating	
Valve seals	FPM or other, depending on pressure and application	
Inlet/Outlet connections	1/4" (BSP or NPT)	
Inlet connection height	1 cm	0,4"
Serviceable valve	Yes	
Valve housing material	Brass and Stainless steel valve constructions, depending on pressure	
Power connection	DIN 43650-A	
Environmental protection	IP65 (NEMA4)	

SERVICE CHART

<i>Date</i>	<i>Description</i>	<i>Name</i>

DIMENSIONS (mm)

